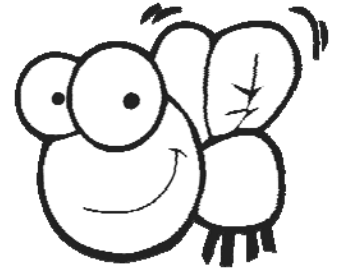


Name \_\_\_\_\_ **Ellipsis Omission**



## Leave It Out....

An ellipsis is a series of three dots ( . . . ) which shows that some text has been left out. Use the ellipsis to shorten a long quotation. The text that is omitted doesn't change the meaning of the quotation, and the reader can still understand the quotation without it.

**DIRECTIONS:** Practice shortening quotations for your research project. Read the assigned text then write four sentences that quote from the text, using an ellipsis. Be sure to embed your quotations properly so that the reader understands both their source and their context.

1. \_\_\_\_\_

\_\_\_\_\_

\_\_\_\_\_

2. \_\_\_\_\_

\_\_\_\_\_

\_\_\_\_\_

3. \_\_\_\_\_

\_\_\_\_\_

\_\_\_\_\_

4. \_\_\_\_\_

\_\_\_\_\_

\_\_\_\_\_