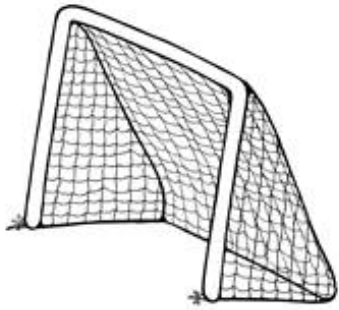


Name _____ Long and Short Sound Spelling

Long and Short "O" Sounds

DIRECTIONS: Say the name of each picture aloud. If you hear an ō sound, write "oa" on the line. If you hear an ɔ sound, write "o" on the line.



g _ _ l



bl _ _ ck



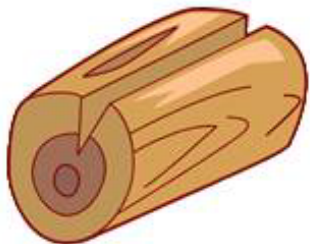
cl _ _ ck



g _ _ t



b _ _ t



l _ _ g



s _ _ ck



t _ _ st



t _ _ d



r _ _ ck